

Bringing traditional luxury to modern architectural designs



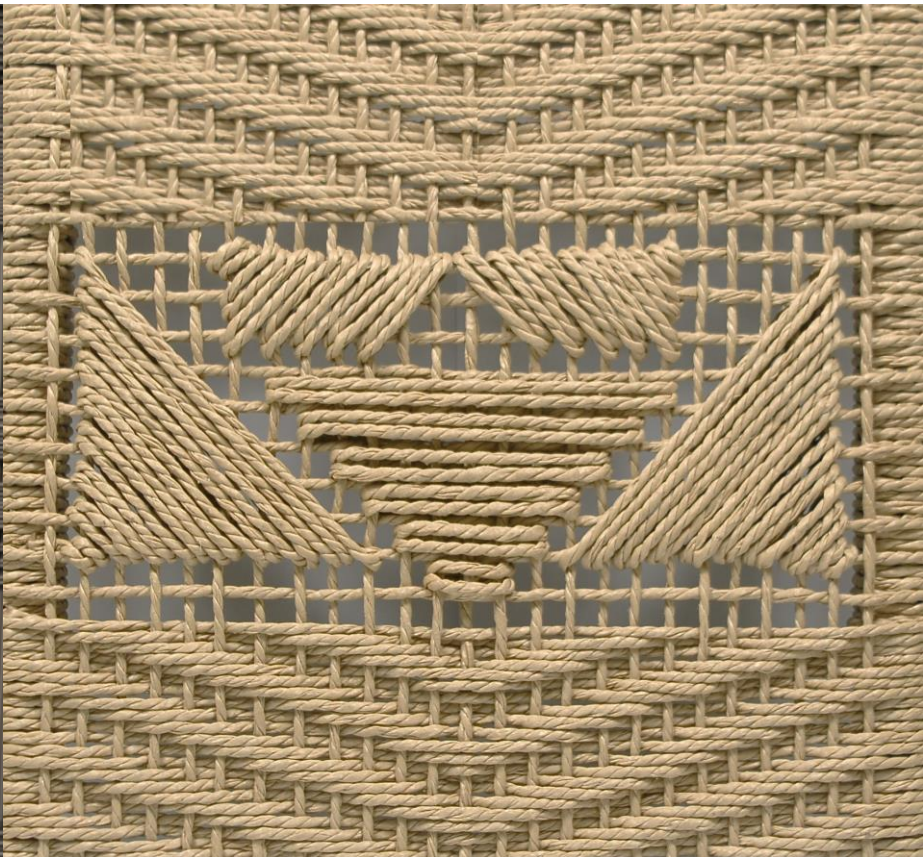
batavia
LIVING FURNITURE

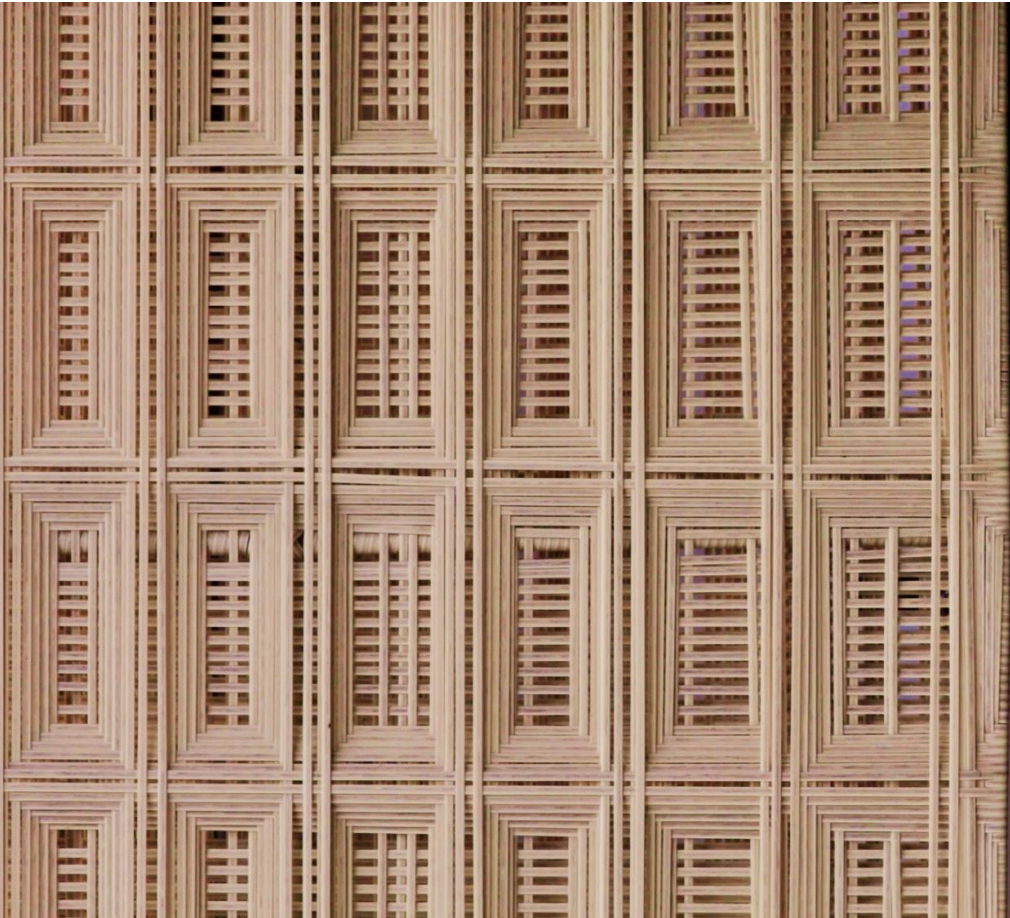


Batavia Living has over 12 years of experience in manufacturing synthetic rattan outdoor furniture and is a global supplier of many luxury furniture brands and resort projects.

In 2020, we started to manufacture customized synthetic rattan panel product for architectural use which can be used for both interior and exterior decorative façade.

We work with architects and interior designers to provide their masterpiece with an element of Indonesian traditional handcrafted luxury made by Javanese skilled weavers.





We manufacture synthetic rattan panel with aluminum frame. Clients are required to provide the details of the dimensions and the general outlook of the project. 2D architectural drawing of the panel section can help us to quickly calculate the cost.

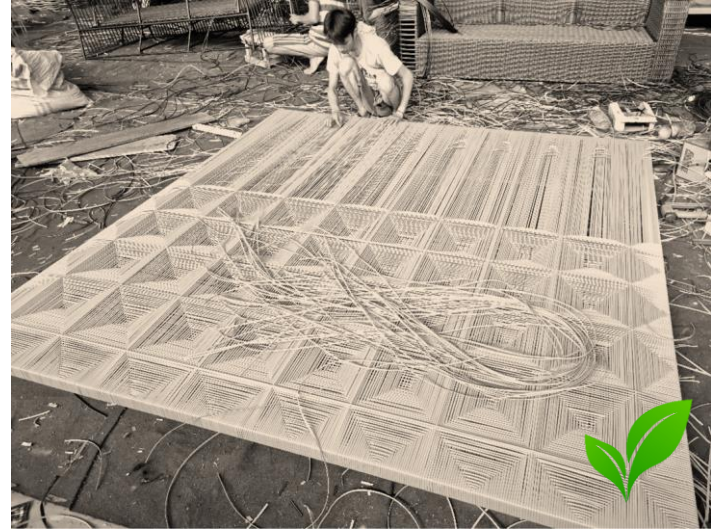
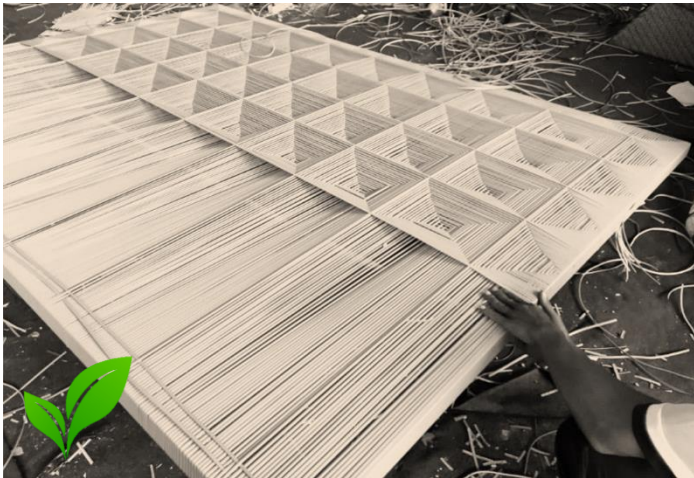
We also provide survey visit service, measurement service, and also the final installation if required. These added services are optional. However, most of the time they have to be included for accuracy purposes.





We create traditionally handcrafted weaving with extraordinary customizable patterns with skilled artisan weavers that have been trained for many years under our nurturing.

We provide hundreds of jobs for our valued weavers who are very dedicated for their work.

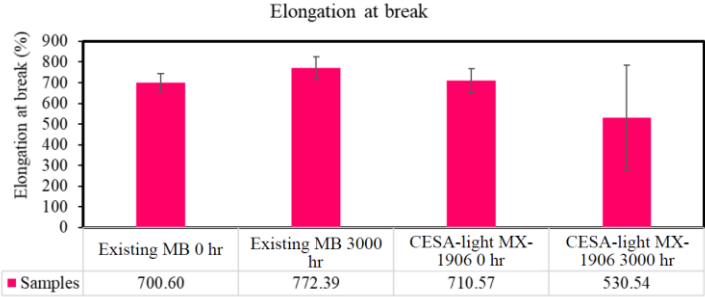
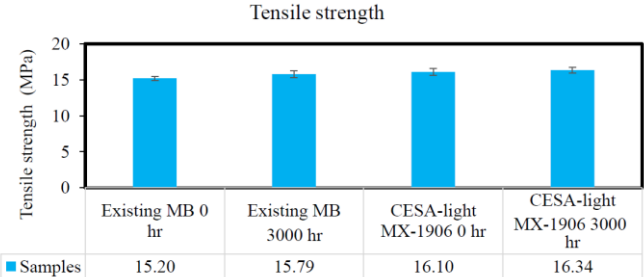


We use all-weather HDPE synthetic rattan which is eco-friendly and 100% recyclable. Our weaving process is sustainable as the leftover wastes are recycled for recycling.

Lab Requested No.: 102470-20

2. Flat artificial rattan

Figure 2. Tensile properties of flat artificial rattan.



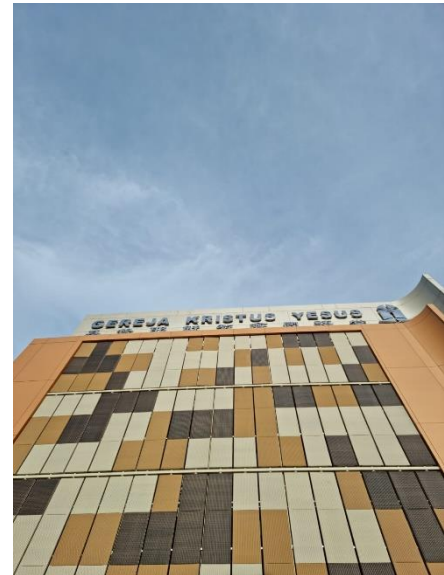
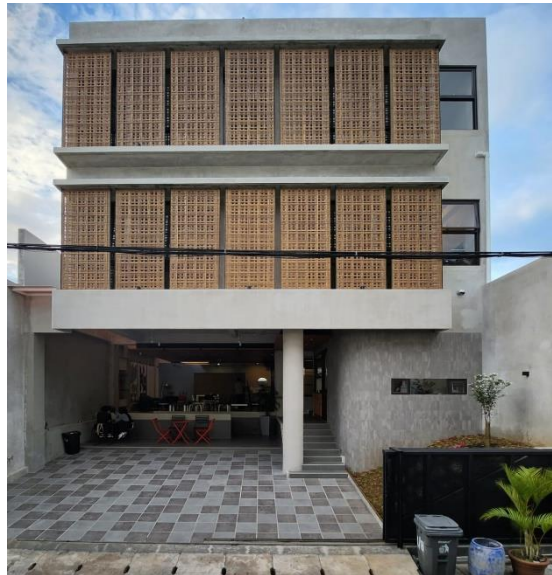
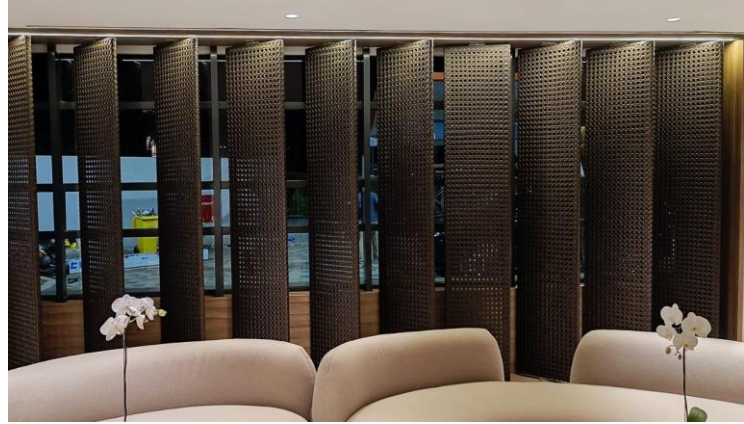
- Lab tested high quality materials
- Fully waterproof and bio-resistant
- Sunlight-resistant gives color fastness for 8 years before slight change (anti-UV tested in lab using artificial weathering)
- Lightweight and fully powdercoated rustproof aluminum frame
- Competitive pricing straight from integrated factory with internal pipe extruder machine for better quality control



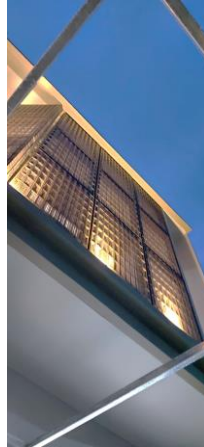
Property of PT. Batavia
Cyclindo Industri (2024)



Property of PT. Batavia
Cyclindo Industri (2024)



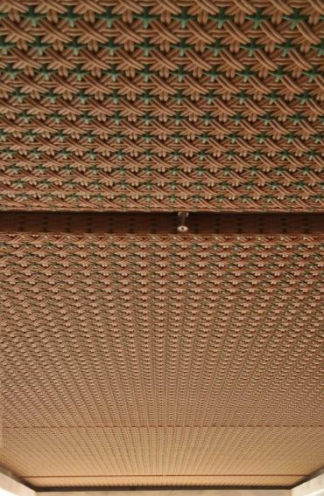
Property of PT. Batavia
Cyclindo Industri (2024)



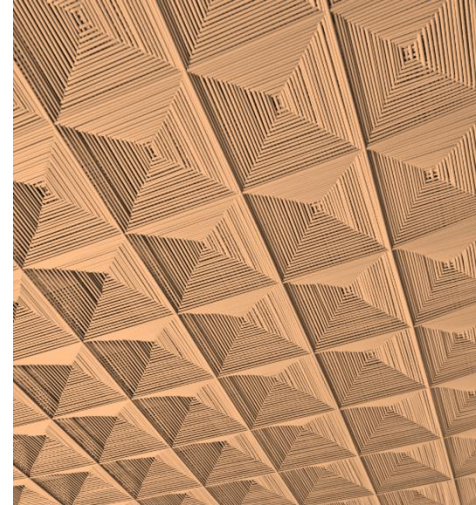
Property of PT. Batavia
Cyclindo Industri (2024)



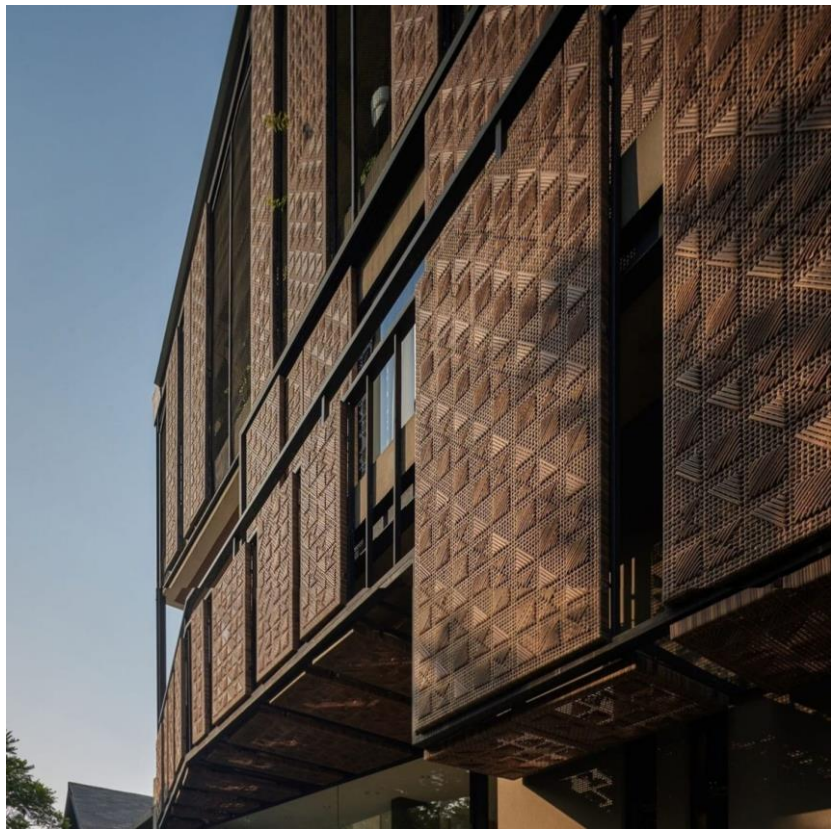
Property of PT. Batavia
Cyclindo Industri (2024)



Property of PT. Batavia
Cyclindo Industri (2024)



Property of PT. Batavia
Cyclindo Industri (2024)



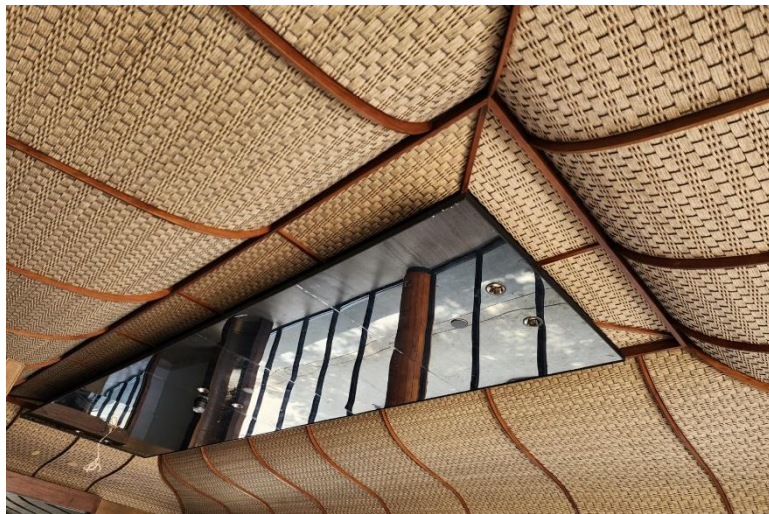
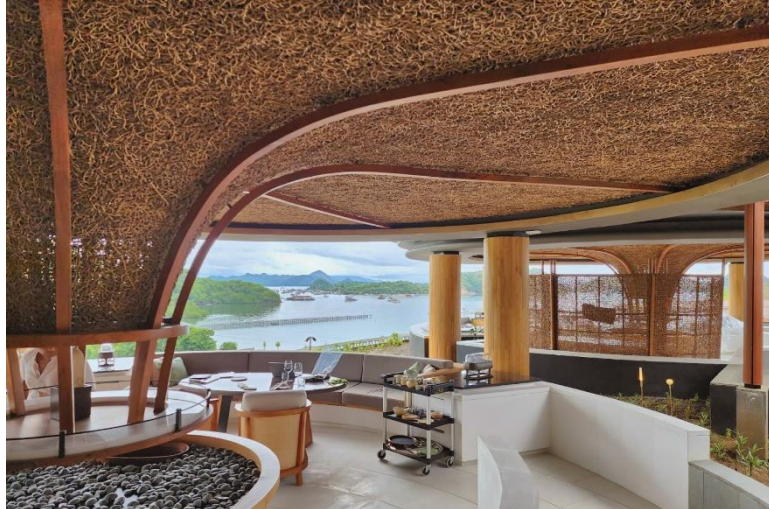
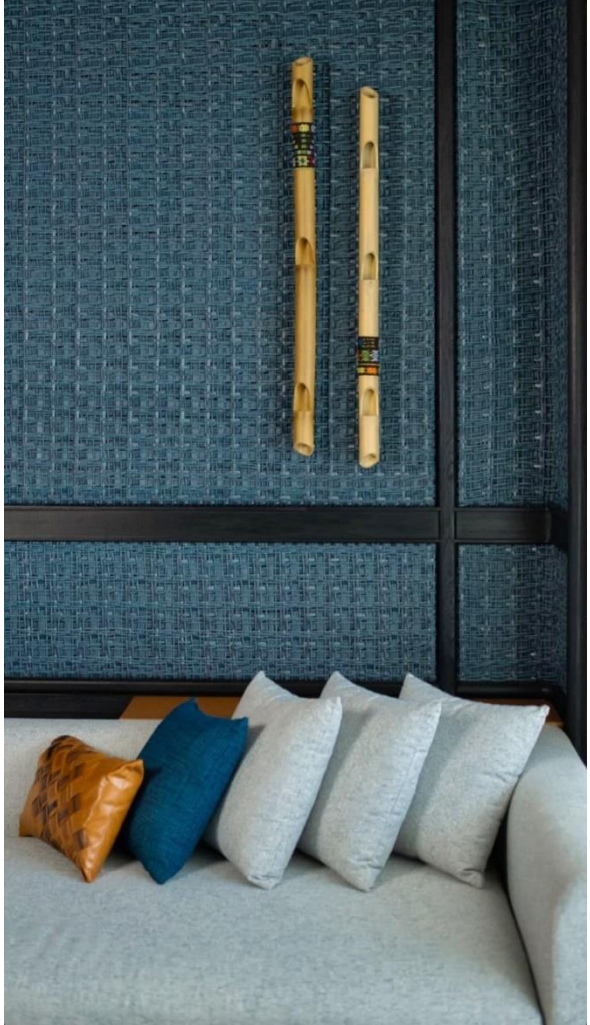
Property of PT. Batavia
Cyclindo Industri (2024)



Property of PT. Batavia
Cyclindo Industri (2024)



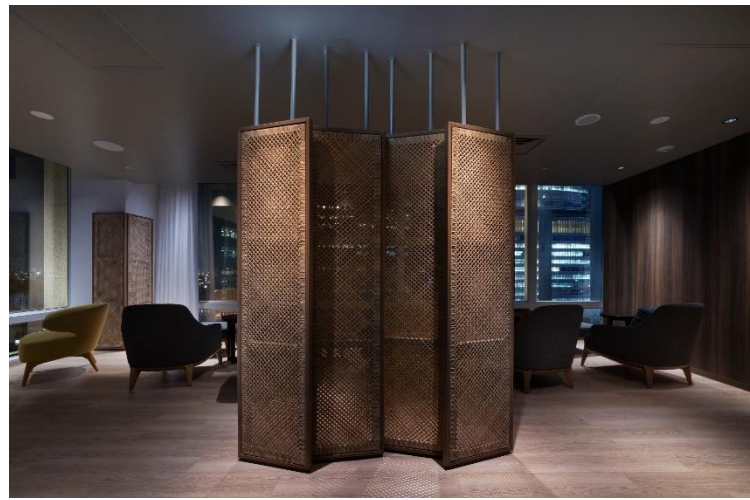
Property of PT. Batavia
Cyclindo Industri (2024)



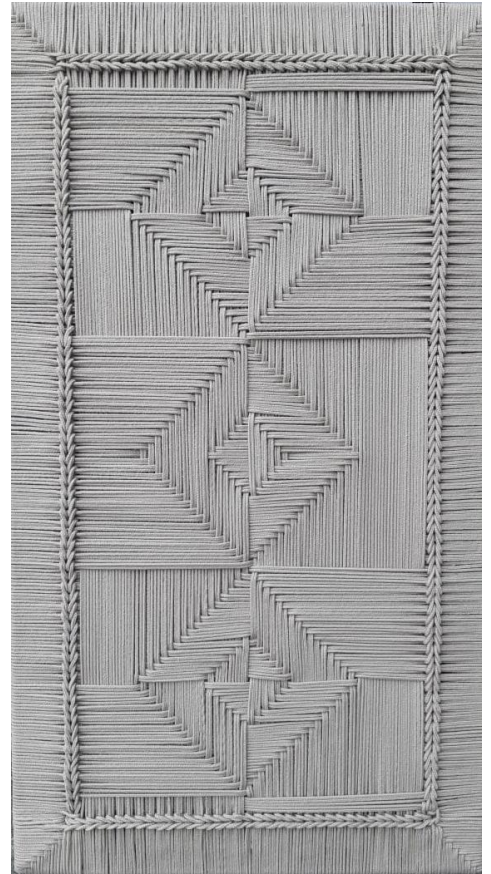
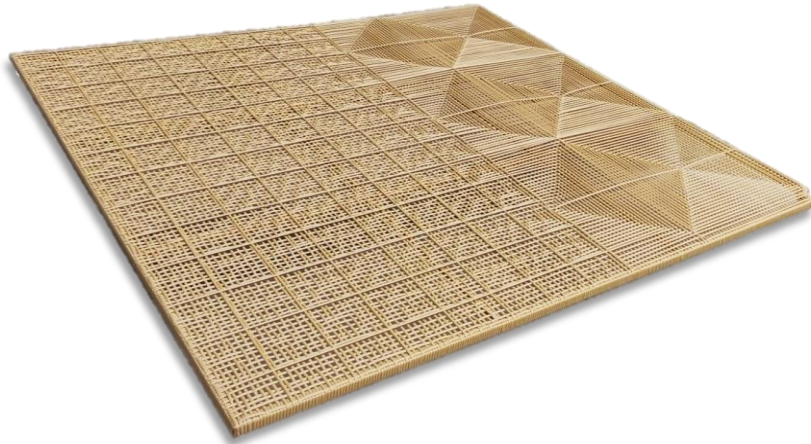
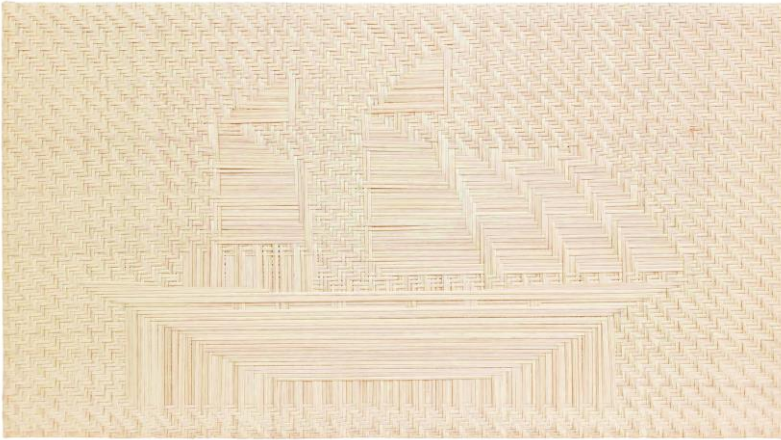
Property of PT. Batavia
Cyclindo Industri (2024)



Property of PT. Batavia
Cyclindo Industri (2024)



Property of PT. Batavia
Cyclindo Industri (2024)



Property of PT. Batavia
Cyclindo Industri (2024)

Pattern 1 - Square elevation



Pattern 4 - Random square 3D



Pattern 2 - Rectangle elevation



Pattern 5 - Flower cane



Pattern 3 - Corner staircase



Pattern 6 - Zig zag / Herringbone



Pattern 7 – Diagonal cross pattern



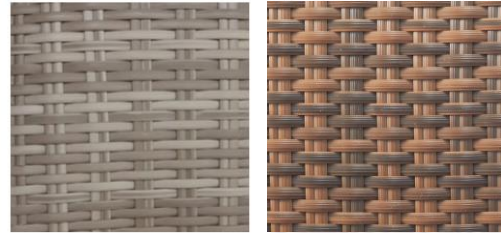
Pattern 10 – Dense irregular



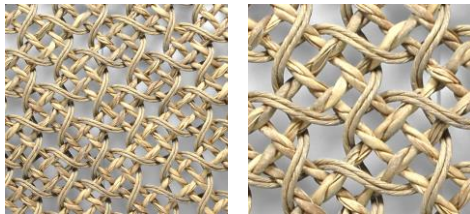
Pattern 8 – Random triangle



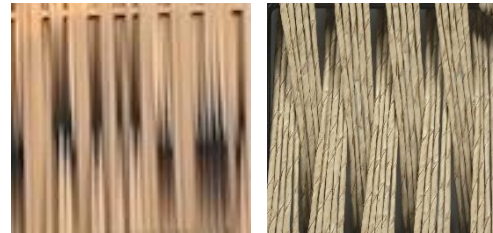
Pattern 11 – Normal linear dense weaving



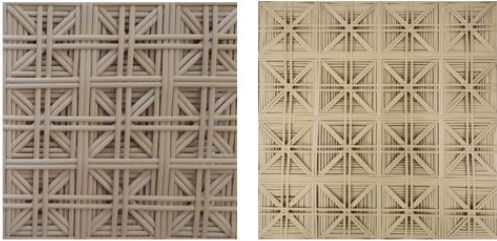
Pattern 9 – Talisman (medium)



Pattern 12 – Vertical open weaving



Pattern 13 – X square



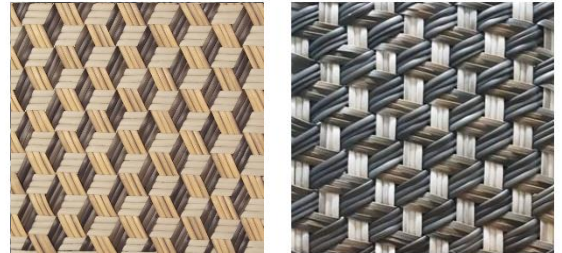
Pattern 16 – Batik (high-level)



Pattern 14 – Skeletal



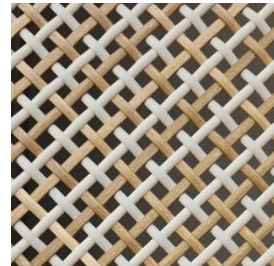
Pattern 17 – Triple cross



Pattern 15 - Wayang



Pattern 18 – Diagonal two tone



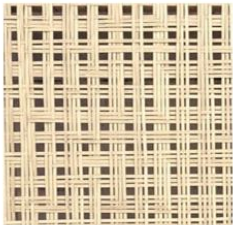
Pattern 19 – Feather



Pattern 22 – Lumba pattern



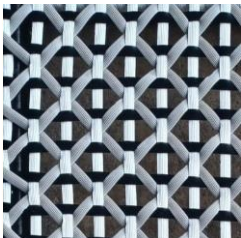
Pattern 20 – Random L pattern



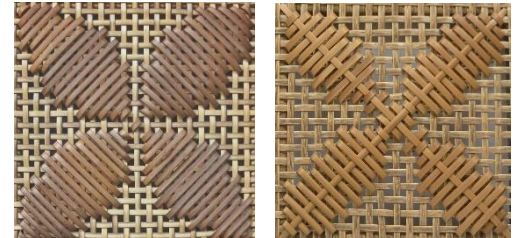
Pattern 23 – Wings



Pattern 21 – Net trio pattern



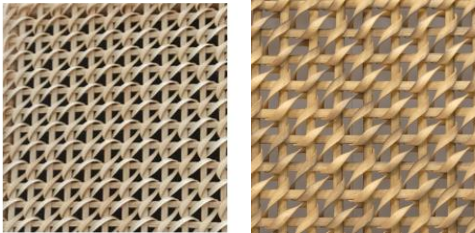
Pattern 23 – Kawung



Pattern 25 – Random square dense



Pattern 26 – Water pattern



Pattern 27 – Diamond pattern (medium)



Pattern 28 – Ulos Batak pattern (high-level)



Pattern 29 – Floating diamonds pattern (medium)



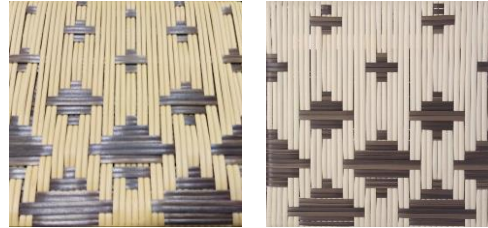
Pattern 30 – Shuriken pattern (high-level)



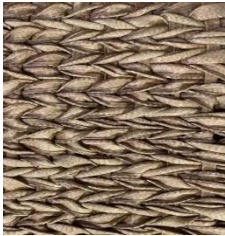
Pattern 31 – Fish (medium)



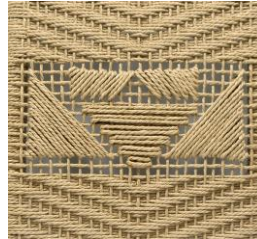
Pattern 34 – Random Star



Pattern 32 – Normal dense kusut



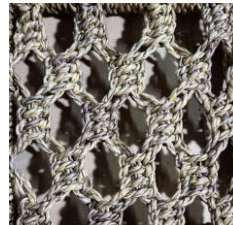
Pattern 35 – Fendi monster (medium)



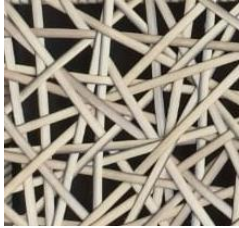
Pattern 33 – Tango (medium)



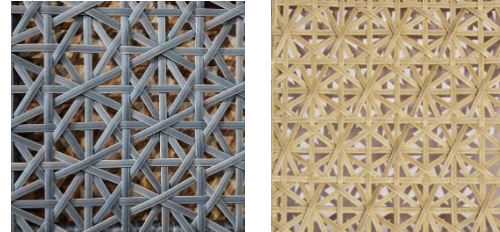
Pattern 36 – DNA



Pattern 37 – Spider Web



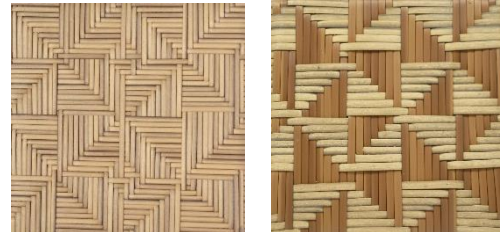
Pattern 40 – Sunflower



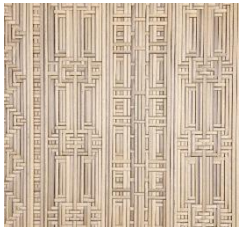
Pattern 38 – Dual-size Plus Pattern



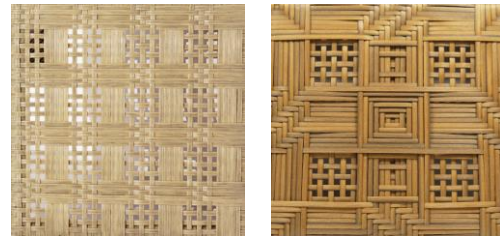
Pattern 41 – Dense Random Corners



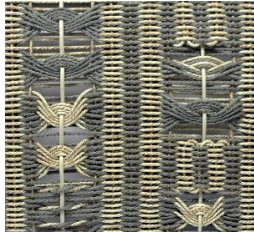
Pattern 39 – Calligraphy (medium)



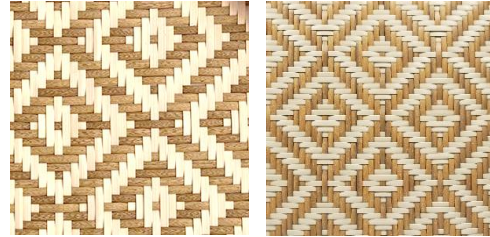
Pattern 42 – Grid



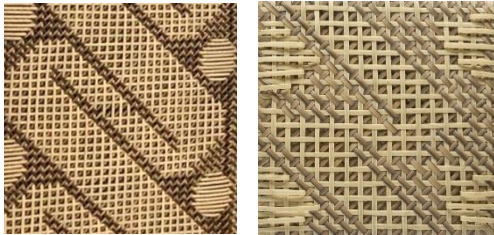
Pattern 43 – Tribal weave LCLB



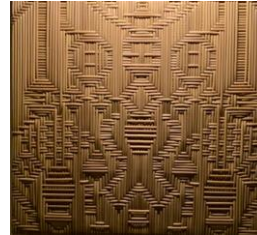
Pattern 46 – Hypnotic Diamond (high-level)



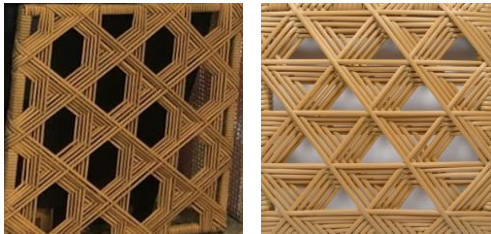
Pattern 44 – Snake Balls (high-level)



Pattern 47 – Mirror Art (high-level)



Pattern 45 – 3D Hexagon



Pattern 48 – Octopus (high-level)





Showroom

Kemang 10 Building, Jl.
Kemang Raya no. 10 A,
Bangka, Jakarta, Indonesia

Contact us through:

www.batavia-living.com

IG: @batavialivingfurniture